

continuing  
to **excel**

And for good reason. For over 4 decades, Tamco has provided standard and customized switchgear solutions to meet diverse customer needs. Our already extensive product range just got wider with the addition of the **Type VH I** double-stacked VCB panel.

## S – P – A – C – E problem ?

Trying to squeeze more power through your overcrowded substation?

### We have the answer ...

TAMCO's 2-in-1 (2-tier) VCB panel Type VH I has slim-line design which spans a mere 700mm width, yet packs 2 VCB in a single panel. The design is driven by the trend to increase power-handling capacity per unit substation floor space, and this has to be done without compromising safety and reliability.

With this addition to our product range, TAMCO once again demonstrates its ability to provide innovative solutions for your switchgear needs.

#### Designed and tested to IEC 56 and IEC 298

- Up to 12kV rated voltage
- 630 & 1250A normal current
- Busbars up to 3150A
- 25 & 31.5kA 3s short-circuit current
- 75 & 95kVp impulse withstand
- Arc-fault proven

#### Short-circuit proven at KEMA

#### Key features

- Space-saving 2-tier design
- Metalclad, fully compartmentalized
- Horizontal isolation, horizontal drawout
- Isolation mechanism operable behind closed door
- Readily extensible
- Will line up with single-tier higher current VCB
- Minimal maintenance

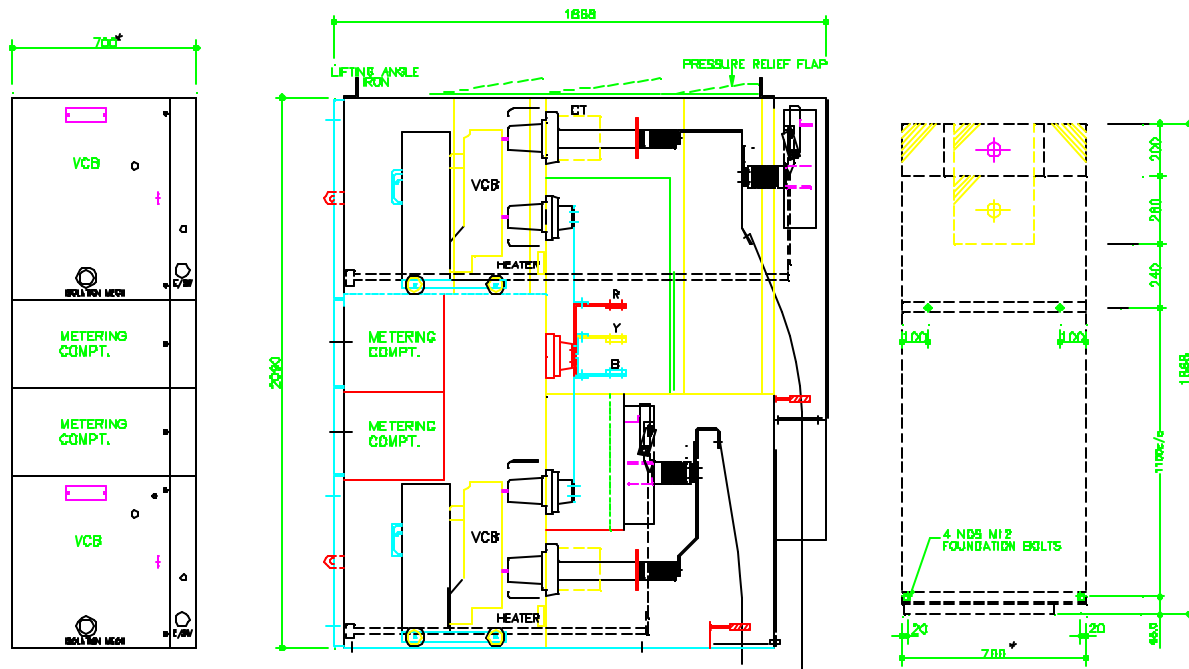


#### Safety interlocks

- VCB cannot be engaged or withdrawn unless it is open
- VCB can only be closed or opened if it is fully engaged or isolated (not in-between)
- VCB cannot be engaged if the control plug is removed
- VCB cannot be engaged when the earthing switch is closed, & vice-versa
- Optional key interlocks

# VCB DATA SPECIFICATION

Model VHI		10J25	10M25	10M32
R	Voltage (kV)	12		
	Insulation level:			
A	Impulse withstand (Kvp)	75, 95		
	1-min Power Freq (kV)	28, 38		
T	Frequency (Hz)	50 / 60		
	Normal Current (A)	630	1250	1250
E	Short-Circuit Breaking Current (kA)	25		31.5
	Transient Recover Voltage (kVp)	20.6		
D	Short-Circuit Making Current (kAp)	63		80
	Operating Sequence	0-0.3 sec – CO – 3 min - CO		
	Duration of Short Circuit (S)	3		
	Opening Time (ms)	35		
	Break Time (ms)	< 60		
	Closing Time at No load (mS)	50		
	Closing Voltage (V DC)	30, 110		
	Tripping Voltage (V DC)	30, 110		
	Full Load switching Life (no. of operations)	10,000		
	Auxiliary Contacts	3a + 3b		
	Approx. Weight (VCB only) kg	75	80	105



FRONT VIEW

TYPICAL SECTIONAL VIEW

FOUNDATION DETAILS

\* 800 for 95 kVp

# TAMCO

TAMCO SWITCHGEAR (MALAYSIA) SDN BHD

SUB LOT 24, LOT 16505, JALAN KELULI 1, KAWASAN PERINDUSTRIAN  
 BUKIT RAJA SEKSYEN 7, 40000 SHAH ALAM, SELANGOR DARUL EHSAN  
 MALAYSIA. TEL: 03 – 33618200 FAX: 03 – 33416200

(6614-W)

E-mail : [tamco@tamco.com.my](mailto:tamco@tamco.com.my) Web Site : [www.tamco.com.my](http://www.tamco.com.my)